

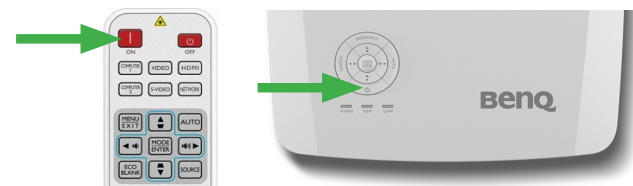
MISSION ROOM

Quick Start Guide

Turning On The System

1. Power on the projectors

- The easiest way to do this is to use the projector remote which will turn on all the projectors at once .
- If the remote cannot be used, power on each projector manually by locating it's power button.



2. Power on the PC



3. Power on the speaker

- The easiest way to do this is to use the speaker remote
- If the remote cannot be used, power on the sound bar by locating it's power button.



The Pen

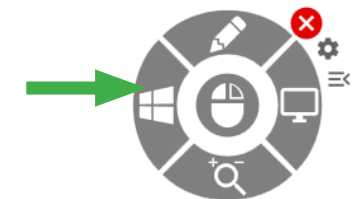
Moving the pen over the screen will move the mouse cursor. Tapping the pen will replicate the left click of a mouse.



- Move the pen over the screen to simulate cursor movement.
- Select and double-click icons and elements, just like a left mouse button.
- To highlight multiple elements, hold and drag the pen.
- To move selected elements, select and drag with the pen.

Launching a presentation or other media

Click and hold the pen to the screen, or click and hold the left mouse button. The radial launcher menu will appear as shown below.

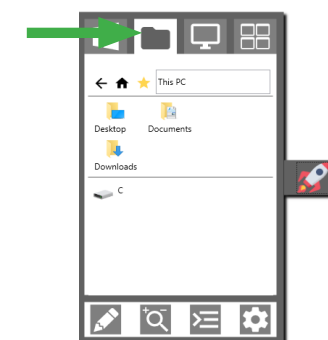


If the radial menu does not appear, the menu may instead be located at the side of the screen - look for the rocket icon shown below.

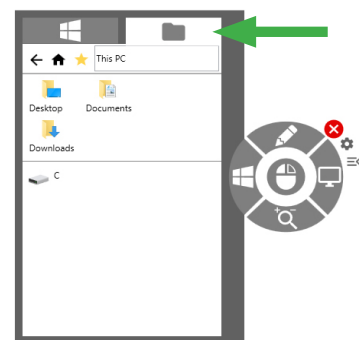


From the radial menu, click on the Windows icon, or from the side menu click the rocket icon. From here choose the folder icon shown below and browse this window to find the PowerPoint file on the PC.

Side menu



Radial menu



From here navigation to the drive and folder where the required media resides and click on it to launch it.